



# NEWSLETTER

JANUARY 2009



## Musically Yours

Message from our Band Director

Happy Holidays

This is the time of the year to spend extra time with family and loved ones. Reflect on what is really important in your life and don't forget to say thank you and I love you to the people closest to you.

Coming up in the New Year; seniors don't forget to prepare and turn in a recording of your state honor band piece. This includes the required scales found on [CBDA.org](http://CBDA.org). This is due January 15th. Solo and Ensemble night is in February. Everyone must prepare a solo for this event. I encourage everyone to form a small ensemble for this event as well.

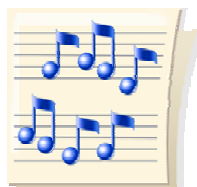
Basketball pep band is coming. Every Friday night that we are in school in January we have a basketball game with a pep band performance. There are also two games in February. Everyone is required to attend three of these games. Section leaders must make sure that there is adequate coverage for their section at every game.

Practice the concert music that was given to you before break. Do not commit any of the music to memory. If a certain passage is too hard for you to learn on your own, pass over that part and practice other sections of the music.

In closing, enjoy your Christmas vacation, remember the reason for the season and keep practicing.

Musically yours,

Mr. B



Marching band – your account needs to be at \$450.00.

**The final payment of \$50.00 is due on February 5.**

Concert Band – your account needs to be at \$50.00.

**The final payment of \$50.00 is due on February 5.**

---

You may make payments by credit card on line using Paypal at the booster web site  
[www.donlugobandboosters.com](http://www.donlugobandboosters.com)

---



## Key Dates to Remember

1/5 Welcome Back To School  
1/6 Boosters Meeting 7pm - Band Room  
1/9, 16, 23, 30 Basketball Pep Band

**January Booster Meeting will be  
Tuesday, Jan. 6 at 7:00**

**See you there!**